

Dmitrii Lokhmanov

Lead Video Systems Engineer |
Projection Mapping & Large-Scale Immersive Experiences

For more than 15 years I design and deliver large-scale video systems for live shows, landmarks, and immersive installations worldwide, covering full-cycle execution from site survey and technical preparation to on-site deployment and live operation.

END-TO-END DELIVERY

- Lead site surveys, laser scanning, photogrammetry and accurate 3D reconstruction of complex surfaces
- Create production-ready 3D models, UV layouts and pixel-perfect projection mapping
- Perform detailed projection studies: lens selection, coverage, blending, brightness and geometric correction
- Design and integrate large-scale LED and multi-projector video systems for live production
- Execute on-site setup, alignment, calibration, troubleshooting and stable live show delivery

DEEP INDUSTRY FOUNDATION

Started in the analog and DVD era and evolved through every major technology shift to today's high-resolution real-time media server workflows and advanced projection mapping techniques. This gives me rare system-level expertise across the entire video pipeline. I quickly diagnose root causes, make confident technical decisions under pressure, and deliver reliable performance in the most demanding live environments.

TEAM COLLABORATION

I work effectively across creative, content, technical, and production teams. I communicate clearly, align stakeholders quickly, and keep delivery reliable through rehearsals and live runs.

TOOLS AND SYSTEMS

Disguise D3 · Watchout · Resolume · TouchDesigner · CAD · Adobe Suite · Cinema 4D · ZBrush · LeycaGeosystems

Selected Projects

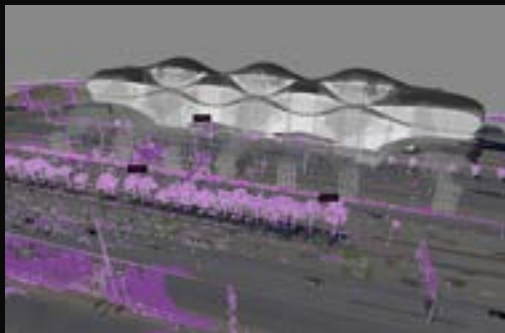
Key projects selected from 1000+ delivered across global productions.



01
DUBAI, UAE
ONE ZA'ABEEL

- One Za'abeel, Dubai — Record-Breaking Projection Mapping (2024)
- Full-cycle technical delivery from laser scan to on-site calibration
- Creation of accurate 3D model and pixel maps for content production pipeline
- On-site projection system supervision, alignment and geometry correction
- Final calibration in Disguise ensuring pixel-accurate playback across complex architecture
- 165+ Panasonic RQ35K projectors with Disguise VX4 media server system Guinness World Record-winning projection spanning twin towers and skybridge (300m+) operation
- <https://www.youtube.com/watch?v=uE-H46ieQfQ>

Selected Projects



02
RIYADH, KSA
NOOR FESTIVAL
KAFD

- Noor Festival, Riyadh — KAFD Architectural Mapping (2025)
- Architectural projection mapping as part of a city-wide festival across multiple locations in Riyadh.
- Delivered full technical execution for KAFD site (setup, alignment, calibration, playback)
- Contributed to pre-production across multiple festival locations: laser scanning, 3D modelling, projection studies, and pixel mapping
- Developed mapping logic and alignment workflows for complex architectural geometries
- Prepared and supported media server systems for multi-site deployment

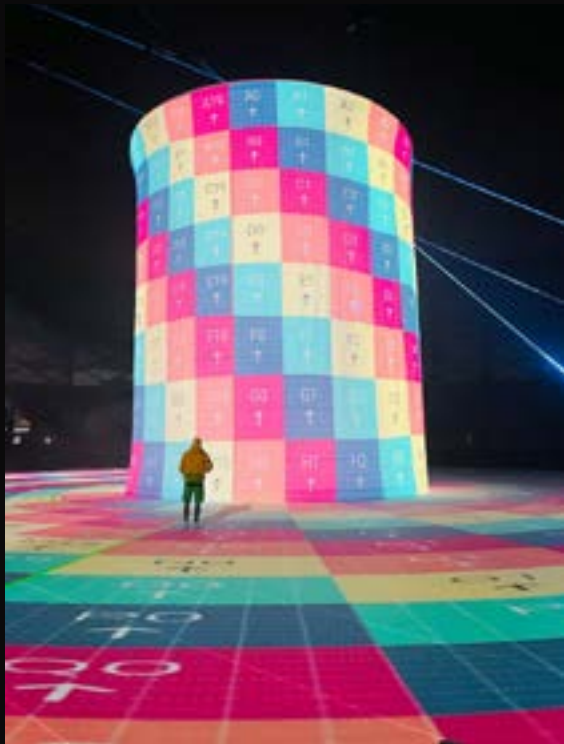
Selected Projects



03
DUBAI, UAE
AZIZI VENICE
LAUNCH

- Coca-Cola Arena, Dubai — AZIZI Venice Launch Show (2024)
- Large-scale arena show combining LED systems, projection, and kinetic stage elements.
- Engineered video system layout across LED screens and projection surfaces
- Coordinated projector and screen placement within complex multi-department setup (lighting, rigging, audio, automation)
- Delivered projection system for moving scenic element (tracked fabric reveal)
- Executed on-site setup, alignment, and calibration under live production constraints
- Supported media playback and show integration within a time-critical environment
- <https://www.youtube.com/watch?v=MFUtyEBAQQI&t=179s>

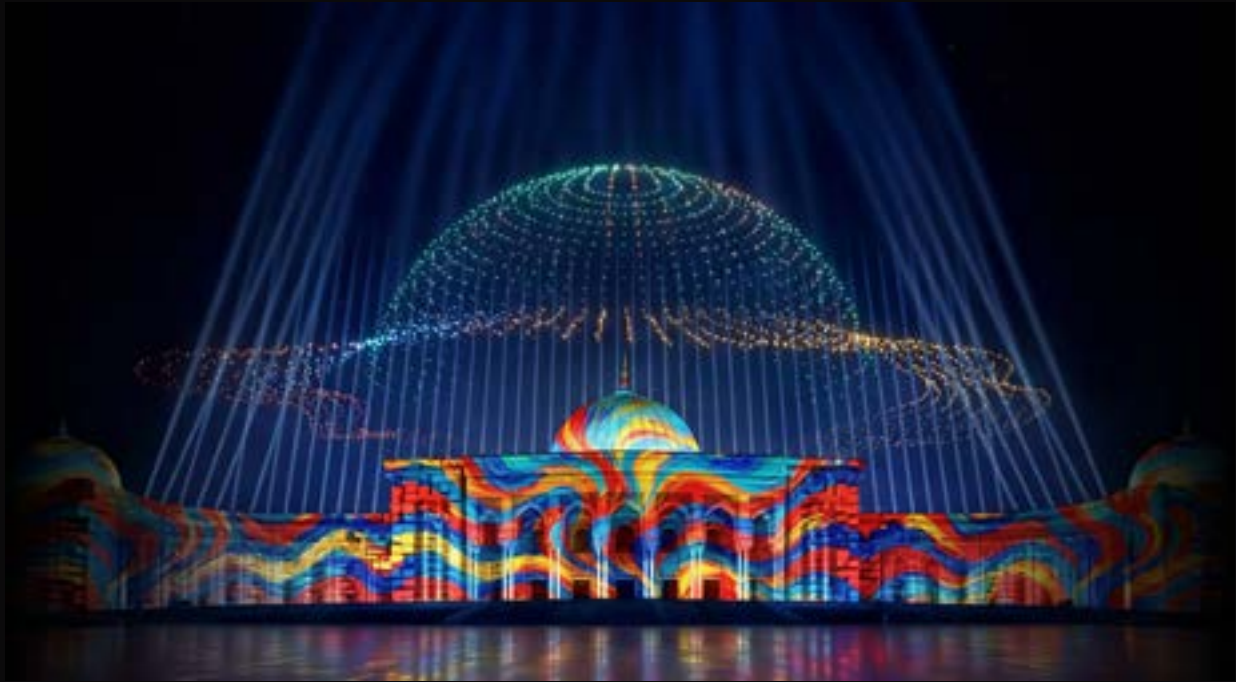
Selected Projects



04
DUBAI, UAE
EMAAR SUPER
CUP

- Emaar Super Cup, Al Maktoum Stadium, Dubai — Stadium Projection Mapping (2025)
- Large-scale pre-match stadium show combining projection mapping and live show systems.
- Delivered full-cycle video system execution from scan to live show
- Performed laser scanning and created accurate 3D stadium model used across departments
- Developed projection study and pixel maps for large-scale stadium environment
- Supervised installation and alignment of projection system on-site
- Executed calibration and show playback under live event conditions
- Worked closely with content studio to ensure accurate mapping and visual integration
- <https://www.youtube.com/watch?v=XCnyuJXpC68>

Selected Projects



05
SHARJAH, UAE
SHARJAH LIGHT
FESTIVAL

- Sharjah Light Festival, UAE — Architectural Projection Mapping (2023–2026)
- Ongoing involvement in large-scale festival pre-production across multiple locations.
- Produced 3D models and UV layouts for content production pipeline
- Developed projection studies and equipment calculations for multiple sites
- Supported technical preparation across diverse architectural surfaces
- Collaborated with content studios to ensure accurate mapping and visual alignment

Selected Projects



06
VOLGOGRAD,
RUSSIA
VICTORY
CONCERT

- Victory Concert — Mamayev Kurgan, Volgograd
- Large-scale architectural projection mapping on complex monument
- Led photogrammetry workflow using drone capture to reconstruct large-scale monument geometry where traditional scanning was not feasible
- Developed accurate 3D model and projection-ready pixel mapping for complex, non-uniform surface
- Delivered full technical pre-production including projection study, system planning, and content alignment requirements
- Contributed to content production as part of Solaris FX, ensuring precise integration with mapped geometry
- Executed on-site setup, alignment, and final calibration for large-scale live projection environment (167 projectors)
- <https://vimeo.com/450058463?fl=pl&fe=cm>

CONTACT

Dmitrii Lokhmanov

Lead Video Systems Engineer



Dubai, UAE



dmitrii.lohmanov@gmail.com



+971 56 525 6390



+971 58 597 9627

Trusted to deliver show-critical video systems for large-scale productions worldwide.

Available for international projects and relocation.
